

SOLAR CARPORT





Our carports not only protect your vehicle from the elements, but also allow you to generate free, sustainable energy from the sun.

They are designed with user comfort and safety in mind, while helping reduce your environmental impact.

With Ewolt, you get a modern and functional solution that uses clean, eco-friendly energy.

Our Mission

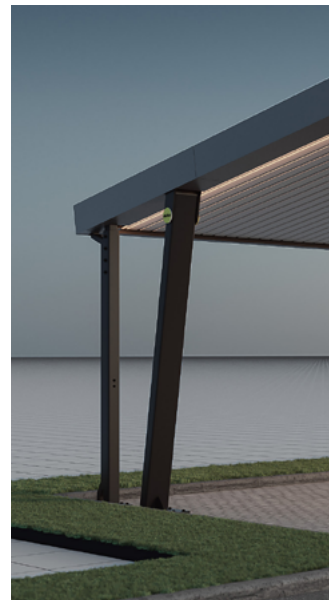
Our mission is to deliver high-quality, innovative, and sustainable solar energy solutions for the automotive industry. Through our products and services, we aim to support sustainable development, protect the environment, and help create a better world for future generations.

Our Vision

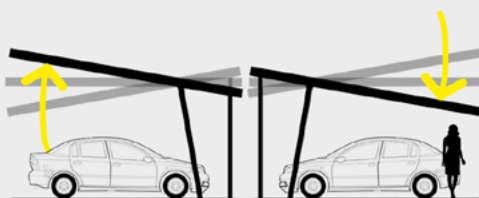
Our vision is to become a leader in self-sustaining solutions by offering products and services that enable the free use of solar energy. We strive to change the world through innovation and education—raising awareness about the benefits of solar energy and sustainable development, while contributing to the reduction of greenhouse gas emissions.



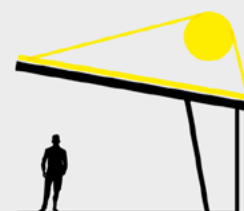
Features



Durable and safe



Adaptive roof angle



Efficient PV
roof



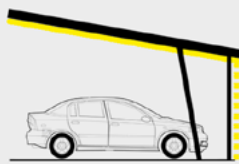
Integrated LED
lighting



incorporated
car charger



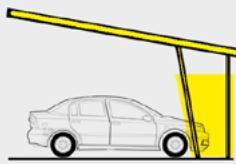
No columns
area



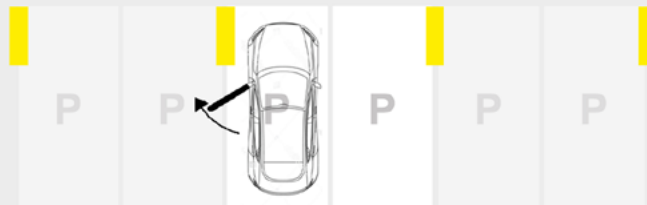
100%water resistant



Modular design



Regular colors



Optimized parking

space-bar



Configurations



PRO COLOR CARPORT

It is a version additionally covered in stainless steel panels, giving it a minimalist look. The panels can also be painted in any RAL color, offering great opportunities for canopy customization.

Height	340cm
Minimum height	240cm
Width	560cm
Depth	540cm
Roof angle	- 10° / 0° / 10°
Main material	hot-dip galvanized steel
Supplementary material	stainless steel
Solar panels	12 x 420W
Panel size	1722x1134x30mm
Total power	5.04 kW
Stainless steel roof side casings	Yes
Inverter and wires at an additional cost	



STANDARD CARPORT

Tilt

A basic version with an industrial look. All profiles and screw joints are visible, giving the carport a raw, functional character that fits perfectly into an industrial environment.

Height	340cm
Minimum height	240cm
Width	560cm
Depth	540cm
Roof angle	- 10° / 0° / 10°
Main material	hot-dip galvanized steel
Supplementary material	stainless steel
Solar panels	12 x 420W
Panel size	1722x1134x30mm
Total power	5.04 kW
Inverter and wires at an additional cost	

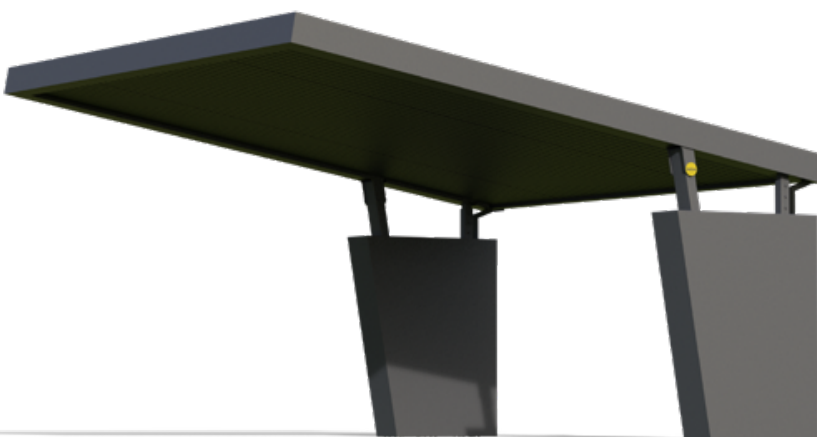


PRO PV CARPORT

This is the most advanced version. Compared to the previous carport, it features a dedicated body that conceals the car charger and optional energy storage.

When designing this carport, we focused on providing a complete solution with carefully selected components that work together seamlessly.

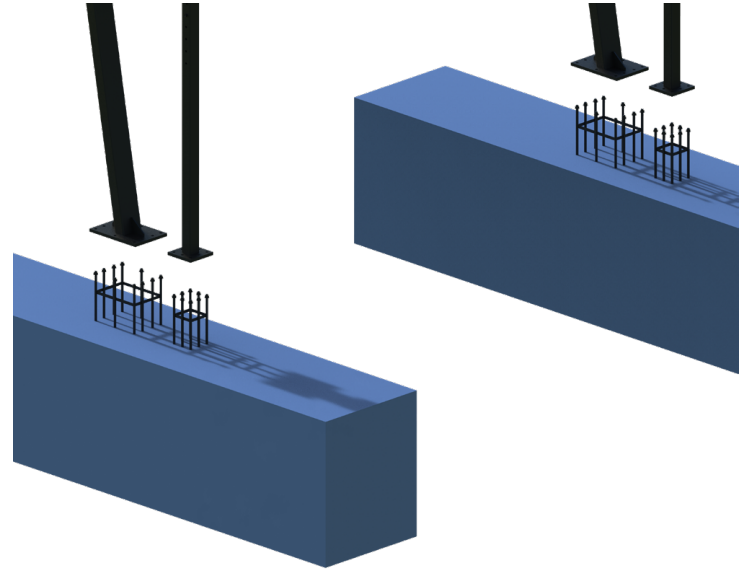
Height	340cm
Minimum height	240cm
Width	560cm
Depth	540cm
Roof angle	- 10° / 0° / 10°
Main material	hot-dip galvanized steel
Supplementary material	stainless steel
Solar panels	12 x 420W
Panel size	1722x1134x30mm
Total power	5.04 kW
Stainless steel roof side casings	Yes
Encapsulated sides	Yes
Integrated car charger	Yes
Inverter and wires at an additional cost	



Foundation

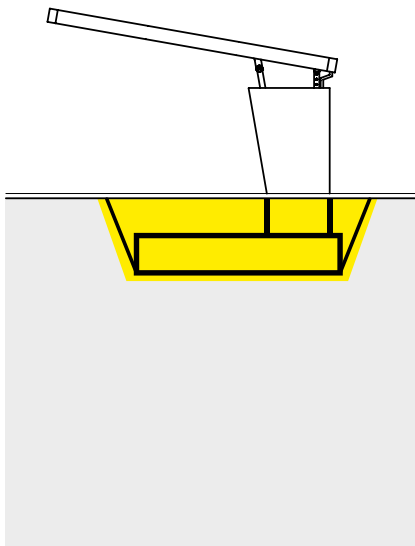
It can be installed using several foundation methods. We offer various solutions to suit site conditions, existing infrastructure, and customer requirements.

When installing a carport, you can choose between traditional foundation methods or advanced systems that save time and minimize disruption to the existing surface.



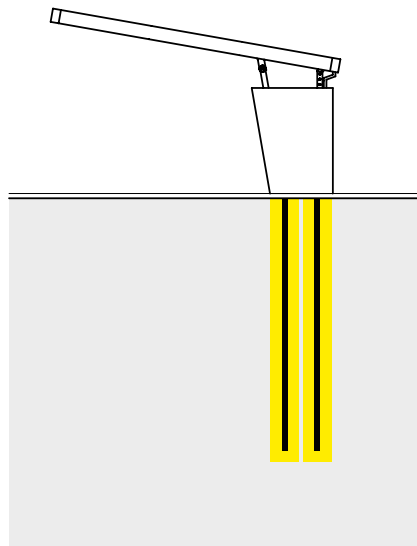
Concrete foundation

A traditional foundation with a large surface area anchors the carport securely to the ground. It is relatively easy to install in most conditions.



Concrete frame

Deeply embedded concrete piles anchor the structure securely to the ground, minimizing the construction footprint.



Deeply embedded steel pins

The long steel studs are driven deep into the ground to minimize interference with existing infrastructure. Embedding the studs requires specialized equipment for deep drilling.

