

ZIP PRO SOLAR

ZIP Pro Solar

ZIP SOLAR is the most advanced solution in our lineup. It features a photovoltaic panel spanning the entire width of the box to supply energy. Integrated batteries ensure the motor operates smoothly, even in cloudy conditions. Since it doesn't require a power connection, installation is quick and easy.



ZIP PRO ALUMINUM

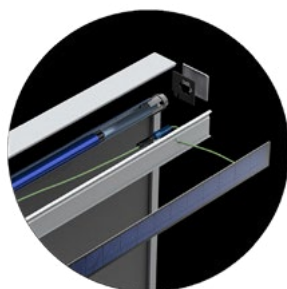
ZIP PRO uses aluminum inlay technology, which ensures that the fabrics remain taut and securely in place even in strong wind conditions. All elements of the system are made of aluminum, including the end caps of the bottom bar and side rails — allowing us to deliver them in the same color as the rest of the system. The fasteners are made of stainless steel, but thanks to special design solutions, they remain invisible to the user. ZIP PRO features a double-sided guide, which facilitates assembly and enhances aesthetics.



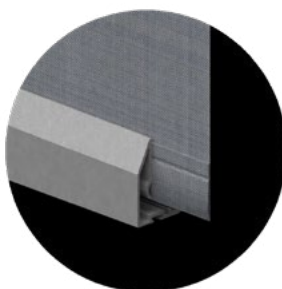
ZIP PRO FM is based on the ZIP PRO system, using the same components and, in addition, offering a cassette with bottom access. This makes it ideal for recessed installations. The pipe removal system with the rolled material facilitates the assembly and servicing of the ZIP PRO FM. When the material is rolled up, the bottom rail is completely hidden in the cassette, thanks to which it creates an aesthetic whole with it. Its well-thought-out design also means that there are no visible welds on the fabric



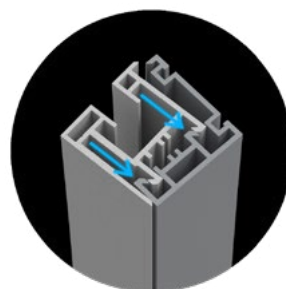
Integrated photovoltaic panel



Hidden battery



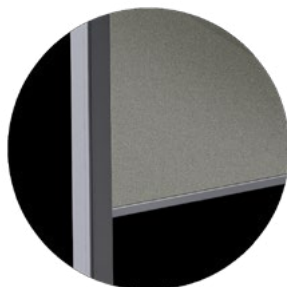
Hidden welds



Click system



Any color



No visible screws



Universal components



Perfectly flat